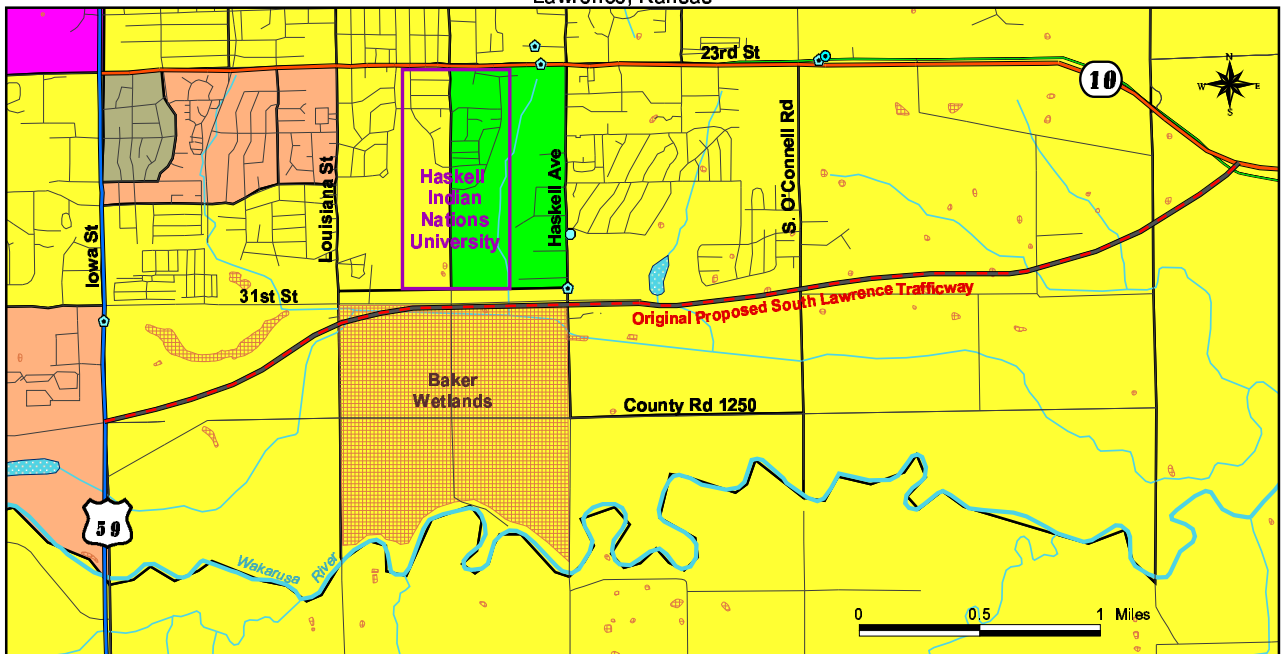


Haskell Indian Nations University / South Lawrence Trafficway

Lawrence, Kansas



Co-Occurrence of Poverty and Race by Census Block Group

Percent Minority	67 - 100	34 - 67	0 - 34	(Value indicates the number of block groups in each category)
0 - 34	1	0	0	
34 - 67	0	1	1	
67 - 100	15	3	1	
Percent Below Poverty Level				

- Treatment Storage and Disposal Sites (TSD - RCRA)
- Large Quantity Hazardous Materials Generators (RCRA)
- Air Emission Sites
- Streets
- Original Proposed South Lawrence Trafficway
- Water Bodies
- Wetlands



NOTE: The Environmental Protection Agency does not guarantee the accuracy, completeness, or timeliness of the information shown, and shall not be liable for any loss or injury resulting from reliance upon the information shown.

Data Sources:
 Demographic - U.S. Census Bureau
 Water Bodies - USGS/EPA
 Facilities - EPA
 Wetlands - U.S. Fish and Wildlife Service

w025301 6-20-01

