

A Green Infrastructure Framework for Greater Kansas City



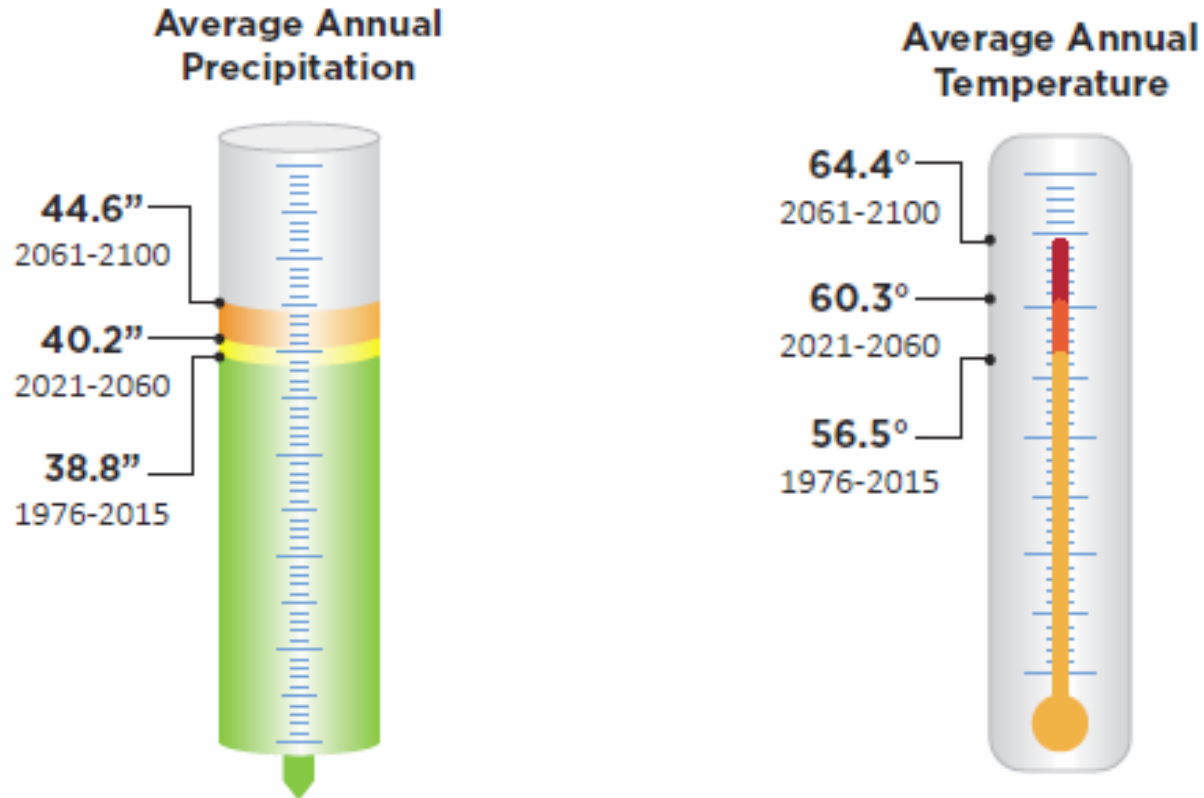


“Greater Kansas City is a region of opportunity.”

Its robust economy, healthy environment and social capacity support the creativity, diversity and resilience of its people, places and communities.”



Climate Projections



Source: Dan Walker, Ph.D. A.M. ASCE, Climate Moneys LLC, and Christopher Anderson, Ph.D., Iowa State University, www.climatelook.com







Green Infrastructure Framework:

Criteria



NEED

- Natural Resources & Human Health

MOMENTUM

- Partners collaborating
- Projects started

ACCESSIBILITY

- Translatable to a wide audience
- Lessons shared
- Replication & education

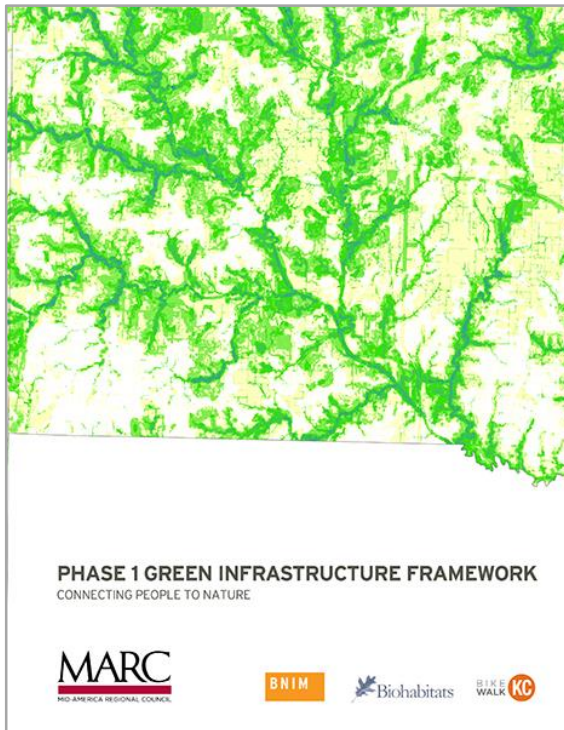
PROXIMITY

- Close to other replicable projects
- Creates a ripple effect

Green Infrastructure Framework

Phase 1:

Connecting People to Nature

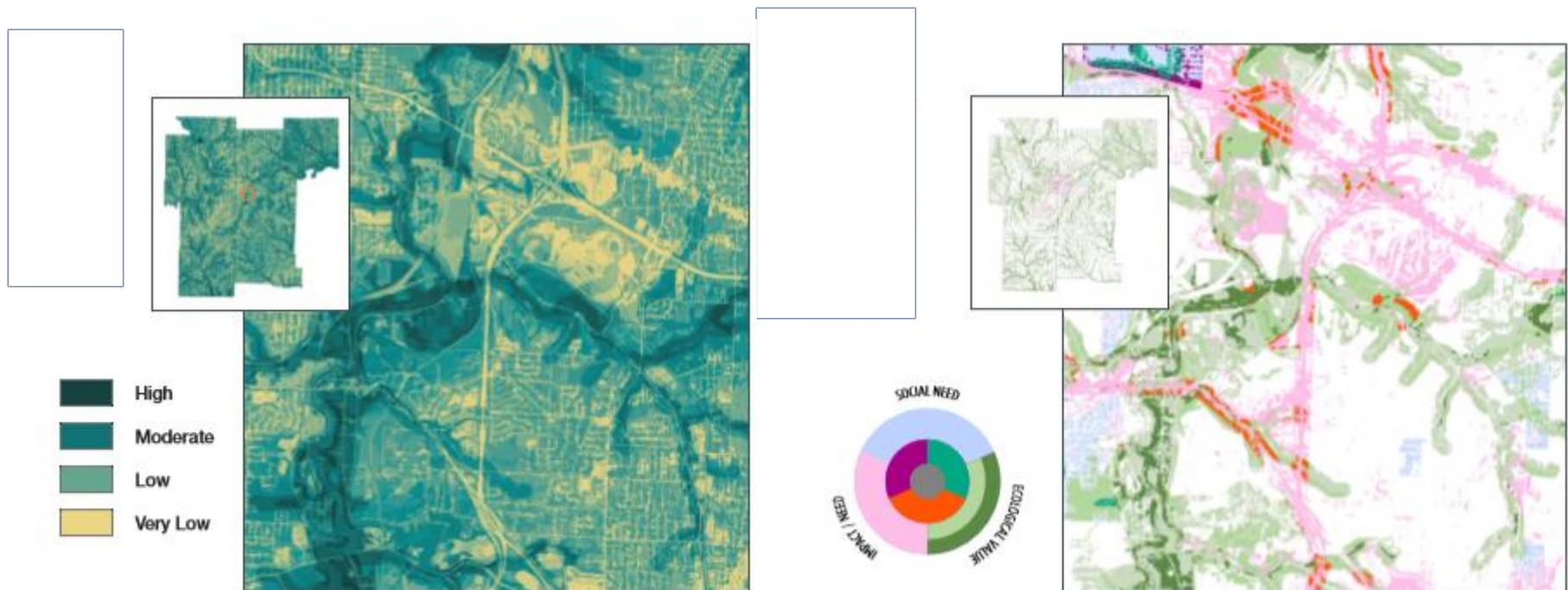


Green Infrastructure Framework: Atlas



Maps of ecological value priority areas and the intersection of ecological and social needs

<https://www.marc.org/Environment/MetroGreen-Parks/Current-Projects/Green-Infrastructure-Framework> (project reports and story map)



Green Infrastructure Framework:

Phase 2: Playbook



Site Example: SM School District Center for Academic Achievement

Design Concepts
Opportunities and Tools
Replicability

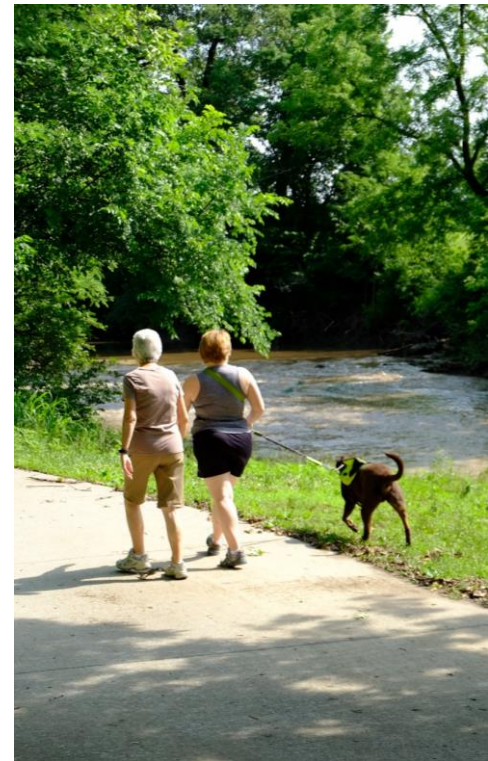




Green Infrastructure Framework:

Phase 3: Policy, Planning & Action

- **Local ordinances**
 - Trees
 - Landscaping
 - Invasive species
 - Planning and zoning regulations
- **Stormwater management standards and planning guidelines**
 - Resilience
 - Maintenance
 - Systems focus (integrated watershed management)
 - Redevelopment
- **Linking transportation and conservation**
 - Water
 - Habitat
 - Place-making





Contact Information

Tom Jacobs

tjacobs@marc.org, 816-701-8352

Alecia Kates

akates@marc.org, 816-701-8233

Thank You



Green Infrastructure Framework: **Atlas**



Maps of ecological value
priority areas and the
intersection of ecological and
social needs

[add link to story map]

