

NEWSLETTER

March
2012

CCI Citizens Advisory Group, Inc.

Glen K. Andrews and Ronald D. McVeigh, Co-Chairs

The CCI Citizen's Advisory Group (CAG) Inc. was formed in 2001 and is composed of neighbors concerned with the health and economic well being of our neighborhood with regard to the **Chemical Commodities EPA Superfund site at Blake and Keeler.**



EPA Superfund site
Then →

Now →

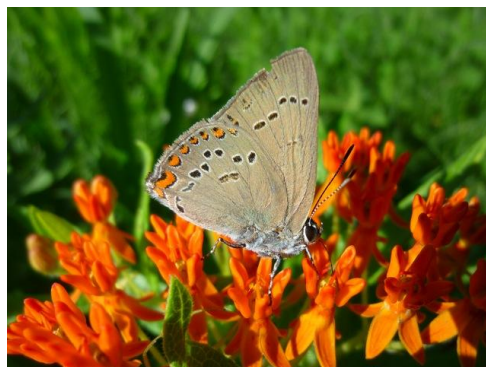
NEAR FUTURE ?

Turning an Ecological Disaster into an Ecological Asset

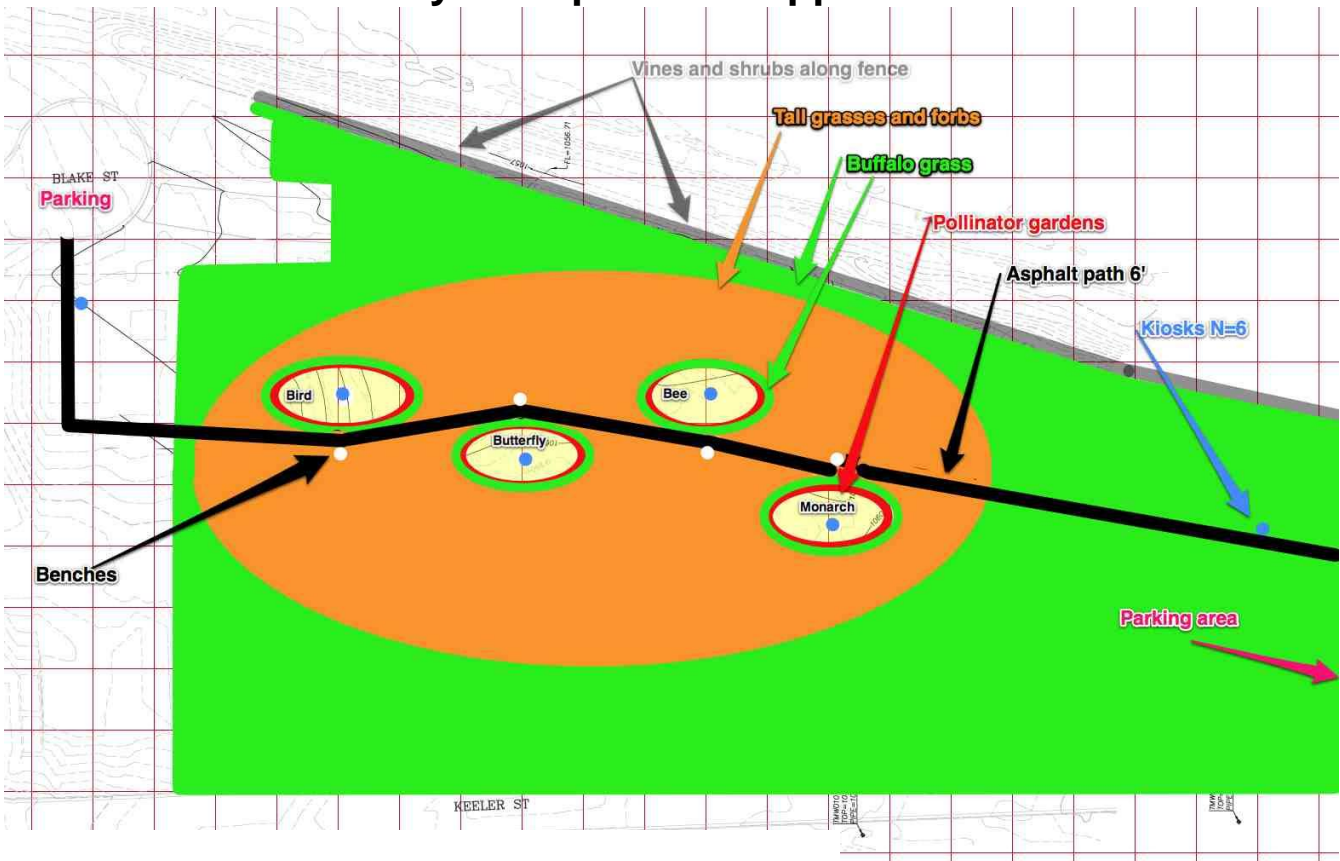
Next CAG Meeting

Monday, March 26 at 7:00 PM

City of Olathe Fire Administration Building
1225 South Hamilton Circle, Olathe, Kansas.



We need your input and support! Please attend!



Olathe Walk-Through Educational Habitat

- Habitat for pollinators and local wildlife
- An introduction to plants and their pollinators (native and introduced plants)
- A guided opportunity to learn the importance of pollination
- Citizen science opportunities for families, teachers and scouts
- Hands-on observation
- Studies of biodiversity, phenology (seasonal changes), species interactions, and results of pollination



Preliminary habitat plan

- Low maintenance required by the City of Olathe
- Little or no financial input from the City of Olathe
- Active involvement of high schools, master gardeners and community
- An important ecological asset
- A flagship site for the EPA and the Superfund program

For more information, please contact Jeff Field, EPA Project Manager, at 913-551-7548 or Blythe Jameson, Boeing Communications, at 562-484-1536.