

NEWSLETTER

May 2011

CCI Citizens Advisory Group, Inc.

Glen K. Andrews and Ronald D. McVeigh, Co-Chairs

The CCI Citizen's Advisory Group (CAG) Inc. was formed in 2001 and is composed of neighbors concerned with the health and economic well being of our neighborhood. We united in a common purpose; to share information and be proactive in seeking timely resolution and effective remediation of the Chemical Commodities, Inc. EPA Superfund Site.



Then →



Today →

2011 cleanup will be completed

→FUTURE IS NOW

The purpose of this NEWSLETTER is to help keep residents in the neighborhood informed and involved with issues related to the CCI Superfund site. **Please visit the web page** <http://www.engg.ksu.edu/CHSR/outreach/tosc/sites/olathe.html>, where you will find a great deal of additional information about this EPA Superfund Site.

The final plan for remediation of the site in 2011 is below

Construction Schedule (What to expect)

ACTIVITY	ESTIMATED TIMEFRAMES
1. Mobilization and Site Preparation	May 2 nd – Mid May 2011
2. Well Installations	Early to Mid May 2011
3. Shallow Excavations	Mid May to Early June 2011
4. Large Diameter Auger Excavation	Late May to Mid June 2011
5. Ocheltree St. Trench (Oxidant Delivery)	Late May to Early June 2011
6. Perimeter Trenches (Oxidant Delivery)	June 2011
7. Soil Cover Installation	July/August 2011
8. Site Revegetation	August/September 2011

What to Expect

During Remedial Action Activities



Well Installations



Excavation



Backfilling



Off-Site Disposal

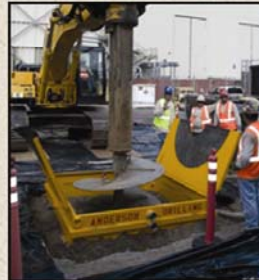
The bulk of construction activities will occur between May and August 2011.

During construction activities you will see pieces of equipment for different activities similar to representative equipment shown to the left and below.

If you have any questions or concerns please contact Jeff Field of the EPA at 913-551-7548.



Compaction



Large Diameter Auger
Excavation



Trenching

EPA contact information:
Jeffrey L. Field, Remedial Project Manager, Superfund Division,
Environmental Protection Agency, 901 N. 5th Street, Kansas City, KS 66101
913-551-7548 e-mail: field.jeff@epa.gov